

# FOOTPRINT MEASUREMENT SYSTEM

*FMS is a unique system which delivers 3D forces contact patch mapping of a tire to analyse grip, wear, behavior and rolling resistance*

## > Product purpose

### Footprint 3D force mapping (Fx, Fy, Fz)

Real contact patch mapping taking into account real 3D force distribution and tread pattern.

### Analysis of tire forces in dynamic conditions

The best solution ever to improve tire grip, rolling resistance, wear and handling.  
Ground measurement are made while running.

## > Strengths

### The only solution in the world

Patented application by Dufournier.

### Exceptional capabilities

Highest mapping resolution (up to 1 mm x 1 mm).  
High accuracy (+/- 0,5%) and low cross talk (1%).

### Unique footprint 3D force mapping

Delivers in addition barycenter and force level of longitudinal, transverse and vertical force mapping of contact patch, tread pattern bloc or any area of interest.

Barycenter of longitudinal, transverse and vertical force mapping.

### Adaptable or turnkey

FMS can be integrated in existing bench or can be provided complete including bench.

### Data analysis

FMS is provided with a 3D footprint analysis software.  
In addition, our experts can do the analysis for you or assist your engineers to do it.

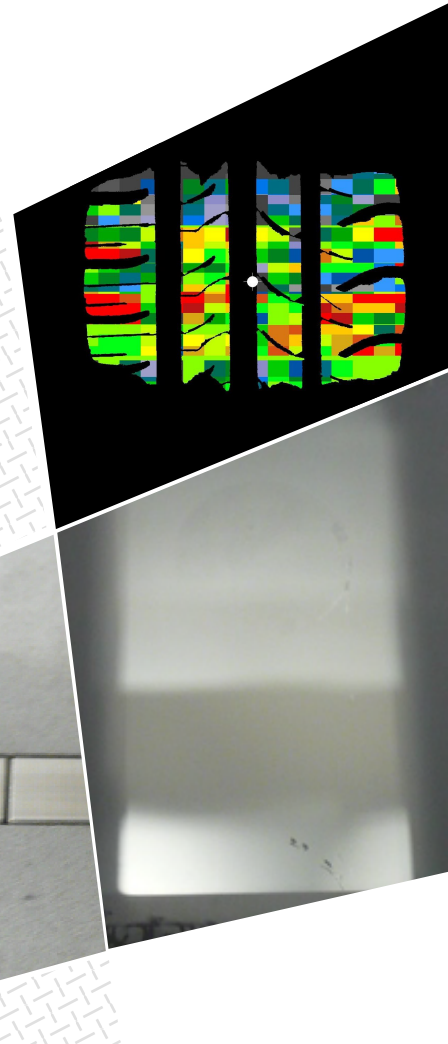
### Basics

FMS provides a unique 3D tire footprint forces report.

## > Our customers

Tire manufacturers, Car makers  
Proving grounds

The only key tool for tire research and developement to have a good understanding of the physical interface between tire and ground.



DI/FMS/N1/en/20170705

**dufournier**

distributes **dufournier**  
INDUSTRIES

32, rue de l'Ambene - 63200 RIOM - FRANCE  
Phone: (+33) 473 630 708  
Fax: (+33) 473 630 709  
Email: sales@dufournier.com  
[www.dufournier.com](http://www.dufournier.com)



High tech experts on tire-suspension